



326

Hydraulic Excavator

Technical Specifications

Configurations and features may vary by region. Please consult your Cat® dealer for availability in your area.

Table of Contents

| | |
|--|-----------|
| Specifications | 2 |
| Engine | 2 |
| Swing Mechanism | 2 |
| Weights | 2 |
| Track | 2 |
| Drive | 2 |
| Hydraulic System | 2 |
| Service Refill Capacities | 2 |
| Standards | 3 |
| Sound Performance | 3 |
| Operating Weights and Ground Pressures | 3 |
| Major Component Weights | 4 |
| Dimensions | 5 |
| Working Ranges and Forces | 7 |
| Bucket Specifications and Compatibility | 8 |
| Attachments Offering Guide | 9 |
| Standard and Optional Equipment | 11 |
| Cab Options | 13 |
| Dealer Installed Kits and Attachments | 14 |
| 326 Environmental Declaration | 15 |

326 Hydraulic Excavator Specifications

Engine

| | | |
|----------------------|--------------------------|---------------------|
| Engine Model | Cat® C7.1 | |
| Net Power | | |
| ISO 9249 | 149.8 kW | 201 hp |
| ISO 9249 (DIN) | 204 hp (metric) | |
| Engine Power | | |
| ISO 14396 | 151 kW | 202 hp |
| ISO 14396 (DIN) | 205 hp (metric) | |
| Bore | 105 mm | 4 in |
| Stroke | 135 mm | 5 in |
| Displacement | 7.01 L | 428 in ³ |
| Biodiesel Capability | Up to B20 ⁽¹⁾ | |

- Meets U.S. EPA Tier 4 Final, EU Stage V, and Japan 2014 emission standards.
- Recommended for use up to 4500 m (14,760 ft) altitude with engine power derate above 3000 m (9,840 ft).
- Advertised power is tested per the specified standard in effect at the time of manufacture.
- Net power advertised is the power available at the flywheel when the engine is equipped with fan, air intake system, exhaust system, and alternator.
- Engine speed at 2,000 rpm.

⁽¹⁾Cat diesel engines are required to use ULSD (ultra-low sulfur diesel fuel with 15 ppm of sulfur or less) or ULSD blended with the following lower-carbon intensity fuels** up to:

- ✓ 20% biodiesel FAME (fatty acid methyl ester)*
- ✓ 100% renewable diesel, HVO (hydrogenated vegetable oil) and GTL (gas-to-liquid) fuels

Refer to guidelines for successful application. Please consult your Cat dealer or “Caterpillar Machine Fluids Recommendations” (SEBU6250) for details.

**Engines with no aftertreatment devices can use higher blends, up to 100% biodiesel (for use of blends higher than 20% biodiesel, consult your Cat dealer).*

***Tailpipe greenhouse gas emissions from lower-carbon intensity fuels are essentially the same as traditional fuels.*

Swing Mechanism

| | | |
|----------------------|----------|---------------|
| Swing Speed | 9.9 rpm | |
| Maximum Swing Torque | 106 kN·m | 78,180 lbf·ft |

Weights

| | | |
|------------------|-----------|-----------|
| Operating Weight | 25 400 kg | 56,000 lb |
|------------------|-----------|-----------|

- Long undercarriage, Reach boom, R2.95 m (9'7") stick, 1.10 m³ (1.44 yd³) General Duty Excavation (GDX) bucket, 600 mm (24") triple grouser shoes and 4600 kg (10,140 lb) counterweight.

Track

| | | |
|---------------------------------------|--------|-------|
| Standard Track Shoes Width | 600 mm | 24 in |
| Optional Track Shoes Width | 700 mm | 28 in |
| Optional Track Shoes Width | 790 mm | 31 in |
| Number of Shoes (each side) | 51 | |
| Number of Track Rollers (each side) | 8 | |
| Number of Carrier Rollers (each side) | 2 | |

Drive

| | | |
|----------------------|----------|------------|
| Gradeability | 35°/70% | |
| Maximum Travel Speed | 5.6 km/h | 3.5 mph |
| Maximum Drawbar Pull | 228 kN | 51,256 lbf |

Hydraulic System

| | | |
|--|---------------------------------|----------------------------------|
| Main System – Maximum Flow – Implement | 481 L/min (241 × 2 pumps) | 127 gal/min (64 × 2 pumps) |
| Maximum Pressure – Equipment – Normal | 35 000 kPa | 5,075 psi |
| Maximum Pressure – Travel | 35 000 kPa | 5,075 psi |
| Maximum Pressure – Swing | 28 400 kPa | 4,118 psi |
| Auxiliary Pump (optional) – Maximum Flow | 54 L/min | 14 gal/min |
| Auxiliary Pump (optional) – Maximum Pressure | 14 000 kPa | 2,031 psi |
| Boom Cylinder – Bore | 135 mm | 5 in |
| Boom Cylinder – Stroke | 1305 mm | 51 in |
| Stick Cylinder – Bore | 140 mm | 6 in |
| Stick Cylinder – Stroke | 1660 mm | 65 in |
| Bucket Cylinder – Bore | 130 mm | 5 in |
| Bucket Cylinder – Stroke | 1156 mm | 46 in |

Service Refill Capacities

| | | |
|-----------------------------------|--------|-----------|
| Fuel Tank Capacity | 474 L | 125.2 gal |
| Cooling System | 25 L | 6.6 gal |
| Engine Oil (with filter) | 25 L | 6.6 gal |
| Swing Drive | 11.5 L | 3.0 gal |
| Final Drive (each) | 4.5 L | 1.2 gal |
| Hydraulic System (including tank) | 310 L | 81.9 gal |
| Hydraulic Tank | 147 L | 38.8 gal |
| Diesel Exhaust Fluid (DEF) Tank | 41 L | 10.8 gal |

326 Hydraulic Excavator Specifications

Standards

| | |
|---|-------------------------|
| Brakes | ISO 10265:2008 |
| Cab/Operator Protective Guards (OPG) (optional) | ISO 10262:1998 Level II |
| Cab/Rollover Protective Structure (ROPS) | ISO 12117-2:2008 |

Sound Performance

| | |
|----------------------------|-----------|
| ISO 6395:2008 (external) | 103 dB(A) |
| ISO 6396:2008 (inside cab) | 70 dB(A) |

- Hearing protection may be needed when operating with an open operator station and cab (when not properly maintained or doors/windows open) for extended periods or in a noisy environment.

Operating Weights and Ground Pressures

| | 600 mm (24") Triple Grouser Shoes | | 600 mm (24") Double Grouser Shoes | | 700 mm (28") Triple Grouser Shoes | | 790 mm (31") Triple Grouser Shoes | |
|--|--------------------------------------|-----------------|--------------------------------------|-----------------|--------------------------------------|-----------------|--------------------------------------|-----------------|
| | Weight | Ground Pressure | Weight | Ground Pressure | Weight | Ground Pressure | Weight | Ground Pressure |
| | kg (lb) | kPa (psi) | kg (lb) | kPa (psi) | kg (lb) | kPa (psi) | kg (lb) | kPa (psi) |
| Base Machine with 4600 kg (10,140 lb) Counterweight and Long Undercarriage | | | | | | | | |
| Reach Boom + R2.95CB1 (9'8") Stick + 1.10 m ³ (1.44 yd ³) GDX Bucket | 25 400 (56,000) | 50 (7.3) | 25 400 (56,000) | 50 (7.3) | 25 800 (56,900) | 44 (6.4) | 26 100 (57,500) | 39 (5.7) |
| Base Machine with 7400 kg (16,310 lb) Counterweight and Long Undercarriage | | | | | | | | |
| Super Long Reach Boom + SLR7.85A (25'9") Stick + 0.57 m ³ (0.75 yd ³) DC Bucket | 29 000 (63,900) | 58 (8.4) | 28 900 (63,700) | 57 (8.3) | 29 400 (64,600) | 50 (7.3) | 29 700 (65,400) | 45 (6.5) |

All operating weights include a 90% fuel tank with 75 kg (165 lb) operator.

326 Hydraulic Excavator Specifications

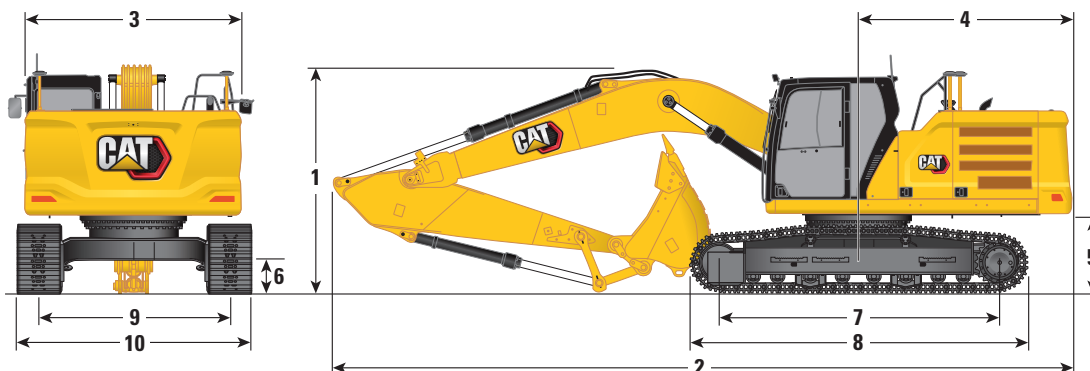
Major Component Weights

| | kg | lb |
|---|--------|--------|
| Base Machine Weight: including upper frame, long undercarriage with two boom cylinders – does not include boom, stick, bucket, stick cylinder, bucket cylinders, tracks, 90% fuel tank and 75 kg (165 lb) operator. | | |
| With 4600 kg (10,140 lb) Counterweight | 17 250 | 38,010 |
| With 7400 kg (16,310 lb) Counterweight | 19 980 | 44,040 |
| Track Shoes: | | |
| 600 mm (24") Width, 12.5 mm (0.49") Thick, Triple Grouser Track Shoes | 3330 | 7,320 |
| 600 mm (24") Width, 13 mm (0.51") Thick, Double Grouser Track Shoes | 3250 | 7,150 |
| 700 mm (28") Width, 12.5 mm (0.49") Thick, Triple Grouser Track Shoes | 3670 | 8,080 |
| 790 mm (31") Width, 12.5 mm (0.49") Thick, Triple Grouser Track Shoes with Step Extension | 4000 | 8,810 |
| Two Boom Cylinders | 460 | 1,010 |
| Weight of 90% Fuel Tank and 75 kg (165 lb) Operator | 470 | 1,020 |
| Counterweights: | | |
| 4600 kg (10,140 lb) Counterweight | 4600 | 10,140 |
| 7400 kg (16,310 lb) Counterweight | 7400 | 16,310 |
| Undercarriage: | | |
| Long Undercarriage | 5020 | 11,070 |
| Booms (including lines, pins, stick cylinder): | | |
| Reach Boom 5.9 m (19'4") | 2050 | 4,520 |
| HD Reach Boom 5.9 m (19'4") | 2190 | 4,810 |
| Super Long Reach Boom 10.2 m (33'6") | 3190 | 7,020 |
| Sticks (including lines, pins, bucket cylinder, bucket linkage): | | |
| Reach Stick R2.5CB1 (8'2") | 1260 | 2,770 |
| Reach Stick R2.95CB1 (9'8") | 1310 | 2,890 |
| HD Reach Stick R2.95CB1 (9'8") | 1390 | 3,060 |
| Super Long Reach Stick 7.85 m (25'9") | 1640 | 3,610 |
| Buckets (without linkage, with tips and side cutters): | | |
| 1.50 m ³ (1.96 yd ³) General Duty (GD) CB Linkage | 1200 | 2,650 |
| 1.10 m ³ (1.44 yd ³) GDX CB Linkage | 1030 | 2,270 |
| 0.57 m ³ (0.75 yd ³) Ditch Cleaning (DC) A Linkage | 390 | 850 |
| 0.53 m ³ (0.69 yd ³) GD A Linkage | 460 | 1,010 |
| Quick Couplers: | | |
| Pin Grabber Quick Coupler with Pins | 530 | 2,650 |
| Pin Grabber Quick Coupler without Pins | 500 | 2,430 |

326 Hydraulic Excavator Specifications

Dimensions

All dimensions are approximate and may vary depending on bucket selection.



| Boom Options | Reach Boom 5.9 m (19'4") | | HD Reach Boom 5.9 m (19'4") | | | |
|--|-----------------------------|----------------------|--------------------------------|----------------------|--------------------|----------------------|
| | Reach Stick | | HD Reach Stick | | | |
| Stick Options | R2.5CB (8'2") | R2.95CB (9'8") | R2.95CB (9'8") | R2.95CB (9'8") | | |
| 1 Machine Height: | | | | | | |
| Top of Cab Height | 3000 mm | 9'10" | 3000 mm | 9'10" | | |
| Top of Global Navigation Satellite System (GNSS) Antenna Height (if installed) | 3030 mm | 9'11" | 3030 mm | 9'11" | | |
| Top of OPG Height | 3140 mm | 10'4" | 3140 mm | 10'4" | | |
| Handrail Height | 3000 mm | 9'10" | 3000 mm | 9'10" | | |
| With Boom/Stick/Bucket Installed | 3430 mm | 11'3" | 3250 mm | 10'8" | | |
| With Boom/Stick Installed | 3200 mm | 10'6" | 3120 mm | 10'3" | | |
| With Boom Installed | 3000 mm | 9'10" | 3000 mm | 9'10" | | |
| 2 Machine Length: | | | | | | |
| With Boom/Stick/Bucket Installed | 10 090 mm | 33'1" | 10 060 mm | 33'0" | | |
| With Boom/Stick Installed | 10 090 mm | 33'1" | 10 040 mm | 32'11" | | |
| With Boom Installed | 8720 mm | 28'7" | 8720 mm | 28'7" | | |
| 3 Upperframe Width | 2940 mm | 9'8" | 2940 mm | 9'8" | | |
| 4 Tail Swing Radius | 3000 mm | 9'10" | 3000 mm | 9'10" | | |
| 5 Counterweight Clearance | 1060 mm | 3'6" | 1060 mm | 3'6" | | |
| 6 Ground Clearance | 440 mm | 1'5" | 440 mm | 1'5" | | |
| 7 Track Length – Length to Center of Rollers | 3830 mm | 12'7" | 3830 mm | 12'7" | | |
| 8 Track Length – Crawler Overall Length | 4640 mm | 15'3" | 4640 mm | 15'3" | | |
| 9 Track Gauge | 2590 mm | 8'6" | 2590 mm | 8'6" | | |
| 10 Undercarriage Width: | | | | | | |
| With 600 mm (24") Shoes | 3190 mm | 10'6" | 3190 mm | 10'6" | | |
| With 700 mm (28") Shoes | 3290 mm | 10'10" | 3290 mm | 10'10" | | |
| With 790 mm (31") Shoes with Steps | 3380 mm | 11'1" | 3380 mm | 11'1" | | |
| Bucket Type | GD _X | | GD _X | | GD _X | |
| Bucket Capacity | 1.1 m ³ | 1.44 yd ³ | 1.1 m ³ | 1.44 yd ³ | 1.1 m ³ | 1.44 yd ³ |
| Bucket Tip Radius | 1580 mm | 5'2" | 1580 mm | 5'2" | 1580 mm | 5'2" |

(continued on next page)

326 Hydraulic Excavator Specifications

Dimensions (continued)

All dimensions are approximate and may vary depending on bucket selection.



Boom Options

Super Long Reach Boom
10.2 m (33'6")

Stick Options

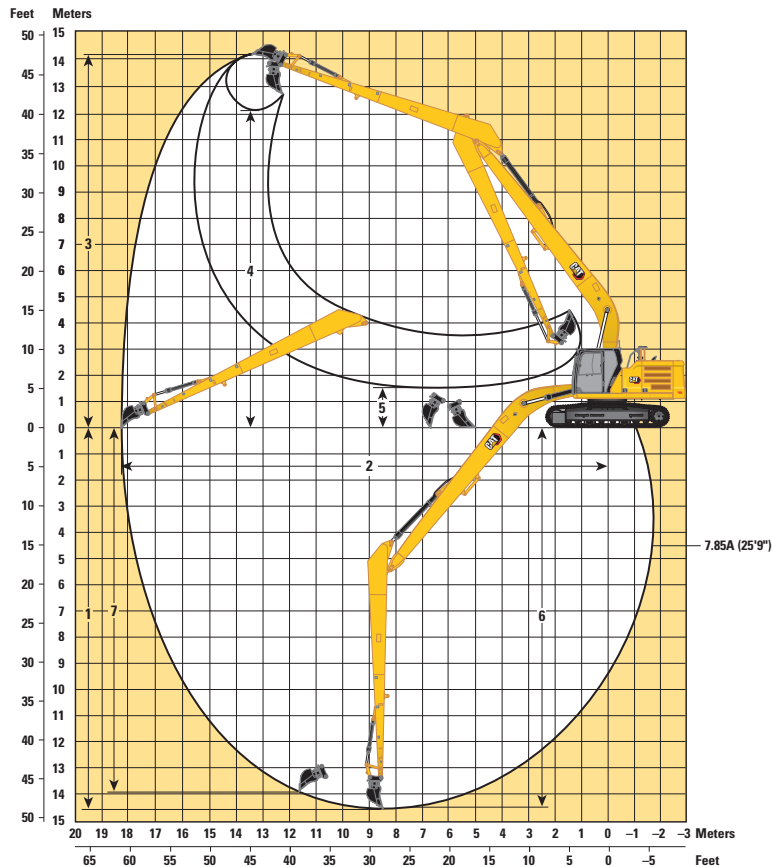
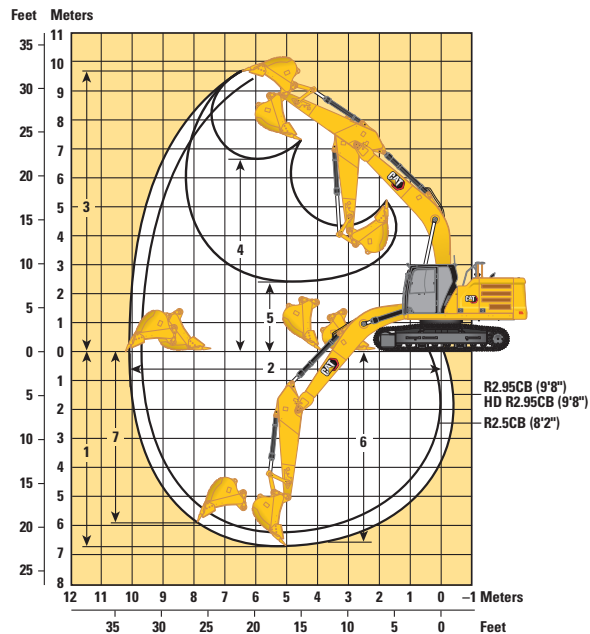
Super Long Reach Stick
7.85A (25'9")

| | | |
|---|---------------------|----------------------|
| 1 Machine Height: | | |
| Top of Cab Height | 3000 mm | 9'10" |
| Top of GNSS Antenna Height (if installed) | 3030 mm | 9'11" |
| Top of OPG Height | 3140 mm | 10'4" |
| Handrail Height | 3000 mm | 9'10" |
| With Boom/Stick/Bucket Installed | 3160 mm | 10'4" |
| With Boom/Stick Installed | 3160 mm | 10'4" |
| With Boom Installed | 3000 mm | 9'10" |
| 2 Machine Length: | | |
| With Boom/Stick/Bucket Installed | 14 350 mm | 47'1" |
| With Boom/Stick Installed | 14 350 mm | 47'1" |
| With Boom Installed | 13 250 mm | 43'6" |
| 3 Upperframe Width | 2940 mm | 9'8" |
| 4 Tail Swing Radius | 3000 mm | 9'10" |
| 5 Counterweight Clearance | 1060 mm | 3'6" |
| 6 Ground Clearance | 440 mm | 1'5" |
| 7 Track Length – Length to Center of Rollers | 3830 mm | 12'7" |
| 8 Track Length – Crawler Overall Length | 4640 mm | 15'3" |
| 9 Track Gauge | 2590 mm | 8'6" |
| 10 Undercarriage Width: | | |
| With 600 mm (24") Shoes | 3190 mm | 10'6" |
| With 700 mm (28") Shoes | 3290 mm | 10'10" |
| With 790 mm (31") Shoes with Steps | 3380 mm | 11'1" |
| Bucket Type | DC | |
| Bucket Capacity | 0.57 m ³ | 0.75 yd ³ |
| Bucket Tip Radius | 1070 mm | 3'6" |

326 Hydraulic Excavator Specifications

Working Ranges and Forces

All dimensions are approximate and may vary depending on bucket selection.



| Boom Options | Reach Boom 5.9 m (19'4") | | HD Reach Boom 5.9 m (19'4") | | Super Long Reach Boom 10.2 m (33'6") | | | |
|--|-----------------------------|----------------------|--------------------------------|----------------------|---|----------------------|---------------------|----------------------|
| | Stick Options | | Stick Options | | Stick Options | | | |
| | Reach Stick | | HD Reach Stick | | Super Long Reach Stick | | | |
| | R2.5CB (8'2") | | R2.95CB (9'8") | | R2.95CB (9'8") | | 7.85A (25'9") | |
| 1 Maximum Digging Depth | 6290 mm | 20'8" | 6740 mm | 22'1" | 6740 mm | 22'1" | 14 580 mm | 47'10" |
| 2 Maximum Reach at Ground Level | 9620 mm | 31'7" | 10 030 mm | 32'11" | 10 030 mm | 32'11" | 18 280 mm | 60'0" |
| 3 Maximum Cutting Height | 9470 mm | 31'1" | 9670 mm | 31'9" | 9670 mm | 31'9" | 14 210 mm | 46'7" |
| 4 Maximum Loading Height | 6500 mm | 21'4" | 6700 mm | 22'0" | 6700 mm | 22'0" | 12 150 mm | 39'10" |
| 5 Minimum Loading Height | 2930 mm | 9'7" | 2470 mm | 8'1" | 2470 mm | 8'1" | 1500 mm | 4'11" |
| 6 Maximum Depth Cut for 2440 mm (8'0") Level Bottom | 6080 mm | 19'11" | 6560 mm | 21'6" | 6560 mm | 21'6" | 14 480 mm | 47'6" |
| 7 Maximum Vertical Wall Digging Depth | 5480 mm | 18'0" | 5920 mm | 19'5" | 5920 mm | 19'5" | 13 980 mm | 45'10" |
| Bucket Digging Force (ISO) | 176 kN | 39,570 lbf | 176 kN | 39,570 lbf | 176 kN | 39,570 lbf | 62 kN | 13,830 lbf |
| Stick Digging Force (ISO) | 143 kN | 32,150 lbf | 122 kN | 27,430 lbf | 122 kN | 27,430 lbf | 45 kN | 10,160 lbf |
| Bucket Type | GDX | | GDX | | GDX | | DC | |
| Bucket Capacity | 1.1 m ³ | 1.44 yd ³ | 1.1 m ³ | 1.44 yd ³ | 1.1 m ³ | 1.44 yd ³ | 0.57 m ³ | 0.75 yd ³ |
| Bucket Tip Radius | 1580 mm | 5'2" | 1580 mm | 5'2" | 1580 mm | 5'2" | 1070 mm | 3'6" |

326 Hydraulic Excavator Specifications

Bucket Specifications and Compatibility

| | Linkage | Width | | Capacity | | Weight | | Counterweight | 4600 kg (10,140 lb) | | 7400 kg (16,310 lb) | |
|--|---------|-------|----|----------------|-----------------|--------|-------|---------------|---------------------|--------------|---------------------|---------------|
| | | mm | in | m ³ | yd ³ | kg | lb | Fill % | Reach | | SLR | |
| | | | | | | | | | R2.5 (8'2") | R2.95 (9'8") | HD R2.95 (9'8") | 7.85A (25'9") |
| Pin-On (No Quick Coupler) | | | | | | | | | | | | |
| General Duty Excavation | CB | 1200 | 47 | 1.03 | 1.35 | 946 | 2,085 | 100 | ● | ● | ● | |
| | CB | 1300 | 51 | 1.10 | 1.44 | 983 | 2,167 | 100 | ● | ● | ● | |
| | CB | 1350 | 53 | 1.20 | 1.57 | 1034 | 2,280 | 100 | ● | ● | ● | |
| | CB | 1650 | 65 | 1.50 | 1.96 | 1157 | 2,552 | 100 | ● | ⊙ | ⊖ | |
| Heavy Duty Excavation | CB | 1200 | 47 | 1.03 | 1.35 | 946 | 2,085 | 100 | ● | ● | ● | |
| | CB | 1300 | 51 | 1.10 | 1.44 | 1098 | 2,420 | 100 | ● | ● | ● | |
| | CB | 1450 | 57 | 1.30 | 1.70 | 1198 | 2,642 | 90 | ● | ● | ● | |
| General Duty Excavation | 312, A | 900 | 36 | 0.53 | 0.69 | 411 | 905 | 100 | | | | ◇ |
| Ditch Cleaning | 312, A | 1200 | 48 | 0.57 | 0.74 | 364 | 803 | 100 | | | | ◇ |
| Maximum load with pin-on (payload + bucket) | | | | | | | | kg | 4308 | 3966 | 3718 | 1044 |
| | | | | | | | | lb | 9,498 | 8,744 | 8,197 | 2,302 |
| With Cat Pin Grabber Coupler | | | | | | | | | | | | |
| General Duty Excavation | CB | 1300 | 51 | 1.10 | 1.44 | 983 | 2,167 | 100 | ● | ● | ● | |
| | CB | 1350 | 53 | 1.20 | 1.57 | 1034 | 2,280 | 100 | ● | ● | ⊙ | |
| | CB | 1650 | 65 | 1.50 | 1.96 | 1157 | 2,552 | 100 | ⊖ | ⊖ | ○ | |
| Heavy Duty Excavation | CB | 1200 | 47 | 1.03 | 1.35 | 946 | 2,085 | 100 | ● | ● | ● | |
| | CB | 1300 | 51 | 1.10 | 1.44 | 1098 | 2,420 | 100 | ● | ● | ⊙ | |
| | CB | 1450 | 57 | 1.30 | 1.70 | 1198 | 2,642 | 90 | ● | ⊙ | ⊖ | |
| Maximum load with coupler (payload + bucket) | | | | | | | | kg | 3782 | 3440 | 3192 | 518 |
| | | | | | | | | lb | 8,337 | 7,583 | 7,037 | 1,141 |

Maximum Material Density:

- 2100 kg/m³ (3,500 lb/yd³)
- ⊙ 1800 kg/m³ (3,000 lb/yd³)
- ⊖ 1500 kg/m³ (2,500 lb/yd³)
- 1200 kg/m³ (2,000 lb/yd³)
- ◇ 900 kg/m³ (1,500 lb/yd³)

The above loads are in compliance with hydraulic excavator standard EN474-5:2006 + A3:2013, they do not exceed 87% of hydraulic lifting capacity or 75% of tipping capacity with front linkage fully extended at ground line with bucket curled.

Capacity based on ISO 7451:2007.

Bucket weight with General Duty tips.

Caterpillar recommends using appropriate work tools to maximize the value customers receive from our products. Use of work tools, including buckets, which are outside of Caterpillar's recommendations or specifications for weight, dimensions, flows, pressures, etc. may result in less-than-optimal performance, including but not limited to reductions in production, stability, reliability, and component durability. Improper use of a work tool resulting in sweeping, prying, twisting and/or catching of heavy loads will reduce the life of the boom and stick.

326 Hydraulic Excavator Specifications

Attachments Offering Guide

Not all Attachments are available in all regions. Consult your Cat dealer for configurations available in your region.

Match

PIN-ON ATTACHMENTS

| Counterweight | | 4600 kg (10,140 lb) | | |
|-------------------|--------------------|---------------------|--------------|-----------------|
| Boom Type | | Reach | | HD Reach |
| Stick Length | | R2.5 (8'2") | R2.95 (9'8") | HD R2.95 (9'8") |
| Hydraulic Hammers | H120 GC | ✓ | ✓ | ✓ |
| | H120 GC Side Mount | ✓ | ✓ | ✓ |
| | H120 S | ✓ | ✓ | ✓ |
| | H130 S | ✓ | ✓ | ✓ |
| | H140 S | ✓ | ✓ | ✓ |
| Rotary Cutters | RC20 | ✓ | ✓ | ✓ |
| | RC30 | ✓ | ✓ | ✓ |

CAT PIN GRABBER COUPLER ATTACHMENTS

| Counterweight | | 4600 kg (10,140 lb) | | |
|-------------------|--------------------|---------------------|--------------|-----------------|
| Boom Type | | Reach | | HD Reach |
| Stick Length | | R2.5 (8'2") | R2.95 (9'8") | HD R2.95 (9'8") |
| Hydraulic Hammers | H120 GC | ✓ | ✓ | ✓ |
| | H120 GC Side Mount | ✓ | ✓ | ✓ |
| | H120 S | ✓ | ✓ | ✓ |
| | H130 S | ✓ | ✓ | ✓ |
| | H140 S | ✓ | ✓ | ✓ |
| Rotary Cutters | RC20 | ✓ | ✓ | ✓ |
| | RC30 | ✓ | ✓ | ✓ |

TRS23 (PIN-ON TOP/S70 BOTTOM) ATTACHMENTS

Some attachments require more hydraulic flow and are best suited with a machine that has HP2 circuits and a tiltrotator with a high flow swivel. Check the hydraulic capability of your machine and tiltrotator and the requirements of your attachment to ensure a proper match.

| Counterweight | | 4600 kg (10,140 lb) | | |
|-------------------|--------|---------------------|--------------|-----------------|
| Boom Type | | Reach | | HD Reach |
| Stick Length | | R2.5 (8'2") | R2.95 (9'8") | HD R2.95 (9'8") |
| Hydraulic Hammers | H120 S | ✓ | ✓ | ✓ |
| | H130 S | ✓ | ✓ | ✓ |

NOTE: Use hammers on tiltrotators less than 10% of working hours per year or maximum 200 hours per year. Refer to your Operation and Maintenance Manual for recommended hydraulic flow requirements.

(continued on next page)

326 Hydraulic Excavator Specifications

Attachments Offering Guide *(continued)*

Not all Attachments are available in all regions. Consult your Cat dealer for configurations available in your region.

Match

TRS23 (PIN-ON TOP/S80 BOTTOM) ATTACHMENTS

Some attachments require more hydraulic flow and are best suited with a machine that has HP2 circuits and a tiltrotator with a high flow swivel. Check the hydraulic capability of your machine and tiltrotator and the requirements of your attachment to ensure a proper match.

Counterweight

4600 kg (10,140 lb)

| Boom Type | | Reach | | HD Reach |
|-------------------|--------|-------------|--------------|-----------------|
| | | R2.5 (8'2") | R2.95 (9'8") | HD R2.95 (9'8") |
| Hydraulic Hammers | H120 S | ✓ | ✓ | ✓ |
| | H130 S | ✓ | ✓ | ✓ |

NOTE: Use hammers on tiltrotators less than 10% of working hours per year or maximum 200 hours per year. Refer to your Operation and Maintenance Manual for recommended hydraulic flow requirements.

BOOM-MOUNT ATTACHMENTS

Counterweight

4600 kg (10,140 lb)

| Boom Type | | Reach | | HD Reach |
|------------------------------------|----------------|-------------|--------------|-----------------|
| | | R2.5 (8'2") | R2.95 (9'8") | HD R2.95 (9'8") |
| Mobile Scrap and Demolition Shears | S3050 Flat Top | ✓ | | ✓ |

Standard and Optional Equipment

Standard and optional equipment may vary. Consult your Cat dealer for details.

| | Standard | Optional | | Standard | Optional |
|--|----------------|----------------|--|----------|----------|
| BOOMS, STICKS AND LINKAGES | | | ELECTRICAL SYSTEM | | |
| 5.9 m (19'4") Reach boom | ✓ | | Maintenance-free 1,000 CCA batteries | ✓ | |
| 5.9 m (19'4") HD Reach boom | | ✓ | Centralized electrical disconnect switch | ✓ | |
| 10.2 m (33'6") Super Long Reach boom | | ✓ | Programmable time-delay working lights | ✓ | |
| 2.5 m (8'2") Reach stick | | ✓ | LED chassis, boom and cab lights | ✓ | |
| 2.95 m (9'8") Reach stick | ✓ | | Premium surround lighting package | | ✓ |
| 2.95 m (9'8") HD Reach stick | | ✓ | ENGINE | | |
| 7.85 m (25'9") Super Long Reach stick | | ✓ | Cat® C7.1 single turbo diesel engine | ✓ | |
| Bucket linkage, CBI type without lifting eye | ✓ | | Three selectable modes: Power, Smart, Eco | ✓ | |
| Bucket linkage, A type without lifting eye for Super Long Reach | | ✓ | 4500 m (14,760 ft) altitude capability with engine power derate above 3000 m (9,840 ft) | ✓ | |
| Bucket linkage, A type without lifting eye for Super Long Reach, Cat Grade | | ✓ | Electric cooling fans with auto-reverse function | ✓ | |
| CAT TECHNOLOGY | | | Auto engine speed control | ✓ | |
| Cat Equipment Management: | | | Auto engine idle shutdown | ✓ | |
| – VisionLink® | ✓ ¹ | | Electric fuel priming pump | ✓ | |
| – VisionLink Productivity | | ✓ ² | 52° C (125° F) high-ambient cooling capacity | ✓ | |
| – Remote Flash | ✓ | | –18° C (0° F) cold start capability | ✓ | |
| – Remote Troubleshoot | ✓ | | Double element air filter with integrated pre-cleaner | ✓ | |
| – Work tool recognition and tracking (PL161) | ✓ | | 2 × 115 Amp dual alternator | ✓ | |
| – Operator Coaching | | ✓ ³ | Two-stage fuel filtration system with water separator and indicator | ✓ | |
| Cat Grade: | | | HYDRAULIC SYSTEM | | |
| – Cat Grade with 2D | ✓ ⁴ | | Electronic main control valve | ✓ | |
| – Cat Grade with 2D with Attachment Ready Option (ARO) | | ✓ | Boom and stick regeneration circuits | ✓ | |
| – Laser catcher | | ✓ | Tandem type electronic main pump | ✓ | |
| – Cat Grade with 3D (single or dual GNSS) | | ✓ | Hydraulic efficiency monitoring | | ✓ |
| – Compatible with 3D grade systems from Trimble, Topcon, and Leica | ✓ | | Auxiliary pump | | ✓ |
| – Cat Grade 3D Ready | | ✓ | Auto warm up | ✓ | |
| – Cat Grade Connectivity | | ✓ ² | Two-speed travel | ✓ | |
| Cat Assist: ⁴ | | | Boom and stick drift reduction valve | ✓ | |
| – Grade Assist | ✓ | | Element type main hydraulic filter | ✓ | |
| – Boom Assist | ✓ | | Hammer return filter circuit | | ✓ |
| – Bucket Assist | ✓ | | ¹ Provides core telematics data to manage health, maintenance insights, and condition monitoring. Other plans available for more comprehensive data reporting. Consult your Cat dealer for details. | | |
| – Swing Assist | ✓ | | ² VisionLink subscription required. Consult your Cat dealer for details. | | |
| Cat Payload: ⁴ | | | ³ VisionLink subscription required for back office reporting. Consult your Cat dealer for details. | | |
| – On-the-go weighing | ✓ | | ⁴ Optional on machines equipped with a Super Long Reach boom and stick. | | |
| – Semiautomatic calibration | ✓ | | | | |
| – Payload/cycle information | ✓ | | | | |
| – VisionLink Productivity back office reporting | | ✓ ² | | | |
| Cat Advanced Payload: | | | | | |
| – Daily totals | | ✓ | | | |
| – Custom lists | | ✓ | | | |
| – Smart weight target | | ✓ | | | |
| – E-ticket Integration | | ✓ ² | | | |
| Other: | | | | | |
| Cat Tiltrotator (TRS) integration | | ✓ | | | |

(continued on next page)

326 Standard and Optional Equipment

Standard and Optional Equipment (continued)

Standard and optional equipment may vary. Consult your Cat dealer for details.

| | Standard | Optional | | Standard | Optional |
|---|----------------|----------|--|----------|----------|
| SAFETY AND SECURITY | | | UNDERCARRIAGE AND STRUCTURES | | |
| Cat Command (remote control) | | ✓ | Two-piece segmented track guiding guards | | ✓ |
| Cat 2D E-Fence: | ✓ ⁴ | | Full length track guiding guards | | ✓ |
| – E-ceiling | | | Swivel guard | | ✓ |
| – E-floor | | | Standard travel motor guards | | ✓ |
| – E-swing | | | HD travel motor guards | | ✓ |
| – E-wall | | | Standard bottom guards | | ✓ |
| – E-cab avoidance | | | HD bottom guards | | ✓ |
| Auto hammer stop | ✓ | | Center upper cover | ✓ | |
| Rear and right-hand-sideview cameras | ✓ | | Grease lubricated track | ✓ | |
| Cab mirror for right-hand-side track edge | | ✓ | 4600 kg (10,140 lb) counterweight | ✓ | |
| 360° visibility | | ✓ | 7400 kg (16,310 lb) counterweight for Super Long Reach | | ✓ |
| Bluetooth receiver | ✓ | | 600 mm (24") double grouser track shoes | | ✓ |
| Ground-level engine shutoff switch | ✓ | | 600 mm (24") triple grouser track shoes | | ✓ |
| Lockable disconnect switch | ✓ | | 700 mm (28") triple grouser track shoes | ✓ | |
| Right-hand handrail and hand hold | ✓ | | 790 mm (31") triple grouser track shoes | | ✓ |
| Signaling/warning horn | ✓ | | Tie-down points | ✓ | |
| Service platform with anti-skid plate and countersunk bolts | ✓ | | | | |
| Hydraulic lock out lever neutralizes all controls | ✓ | | | | |
| Inspection lighting | | ✓ | | | |
| SERVICE AND MAINTENANCE | | | | | |
| Side entry to service platform | ✓ | | | | |
| Grouped location of engine oil and fuel filters | ✓ | | | | |
| Scheduled Oil Sampling (S·O·S SM) ports | ✓ | | | | |
| Ground-level and platform-level dipstick for engine oil | ✓ | | | | |
| Integrated vehicle health management system | ✓ | | | | |

⁴Optional on machines equipped with a Super Long Reach configuration.

Cab Options

| | Comfort | Deluxe | Premium (1 piece windshield) | Premium (2 piece windshield) |
|--|---------|--------|------------------------------------|------------------------------------|
| ROPS | ● | ● | ● | ● |
| OPG | ○ | ○ | ○ | ○ |
| High-resolution 203 mm (8") LCD touchscreen monitor | ● | ● | X | X |
| High-resolution 254 mm (10") LCD touchscreen monitor | X | ○ | ● | ● |
| Auto bi-level air conditioner | ● | ● | ● | ● |
| Jog dial and shortcut keys for monitor control | ● | ● | ● | ● |
| Keyless push-to-start engine control | ● | ● | ● | ● |
| Height-adjustable console | ● | ● | ● | ● |
| Tilt-up left-side console | X | ● | ● | ● |
| Fixed left-side console | ● | X | X | X |
| Mechanical-suspension seat | ● | ● | ● | ● |
| 51 mm (2") seat belt | ● | ● | ● | ● |
| Bluetooth integrated radio with USB/Auxiliary ports | ● | ● | ● | ● |
| 12V DC outlets | ● | ● | ● | ● |
| Document storage | ● | ● | ● | ● |
| Overhead storage and rear storage with nets | ● | ● | ● | ● |
| Beverage holder | ● | ● | ● | ● |
| Cup holder | ● | ● | ● | ● |
| Openable two-piece front window | ● | ● | ● | ○ |
| One piece front windshield | X | X | ○ | ● |
| Rear window emergency exit | ● | ● | ● | ● |
| Radial wiper with washer | ● | ● | X | X |
| Parallel wiper | X | X | ● | ● |
| Openable polycarbonate skylight hatch | X | ● | ● | X |
| Openable steel hatch | ● | X | X | X |
| Laminated roof glass | X | X | X | ● |
| LED dome light | ● | ● | ● | ● |
| Floor welcome light | X | ● | ● | ● |
| Roof sunscreen | X | ● | ● | ● |
| Roller front sunscreen | ● | ● | ● | ● |
| Roller rear sunscreen | ○ | ○ | ● | ● |
| Washable floor mat | ● | ● | ● | ● |
| Beacon ready | ● | ● | ● | ● |
| Bluetooth secure start/Attachment locator reader | ● | ● | ● | ● |
| Cat Stick Steer | ○ | ○ | ○ | ○ |
| Auxiliary relay | X | ○ | ○ | ○ |

- Standard
- Optional
- X Not Available

326 Dealer Installed Kits and Attachments

Dealer Installed Kits and Attachments

Attachments may vary. Consult your Cat dealer for details.

CAB

- Lower radial wiper
- Rain protector plus cab light cover
- Laminated P5A glass front windshield
- LH/RH electrical pedal for tool control
- Armrest kit
- Seat with 4-point seatbelt capability
- Dual exit rear window kit
- 75 mm (3") retractable seat belt

SAFETY AND SECURITY

- Cat Detect – People Detection
- Cat Command – Remote control kit

GUARDS

- HD swivel guard 16 mm (0.63") thick
- Side rubber bumper guard
- Operator Protective Guards (not compatible with cab light cover, rain protector)
- Mesh guard full front (not compatible with cab light cover, rain protector)
- Mesh guard lower half front
- Cab vandalism guard

ELECTRICAL

- Wiring group (jump start)

The following information applies to the machine at the time of final manufacture as configured for sale in the regions covered in this document. The content of this declaration is valid as of the date issued; however, content related to machine features and specifications are subject to change without notice. For additional information, please see the machine's Operation and Maintenance Manual.

For more information on sustainability in action and our progress, please visit <https://www.caterpillar.com/en/company/sustainability>.

Engine

- The Cat® C7.1 engine meets U.S. EPA Tier 4 Final, EU Stage V, and Japan 2014 emission standards.
- Cat diesel engines are required to use ULSD (ultra-low sulfur diesel fuel with 15 ppm of sulfur or less) or ULSD blended with the following lower-carbon intensity fuels** up to:
 - ✓ 20% biodiesel FAME (fatty acid methyl ester)*
 - ✓ 100% renewable diesel, HVO (hydrogenated vegetable oil) and GTL (gas-to-liquid) fuels

Refer to guidelines for successful application. Please consult your Cat dealer or “Caterpillar Machine Fluids Recommendations” (SEBU6250) for details.

**Engines with no aftertreatment devices can use higher blends, up to 100% biodiesel (for use of blends higher than 20% biodiesel, consult your Cat dealer).*

***Tailpipe greenhouse gas emissions from lower-carbon intensity fuels are essentially the same as traditional fuels.*

Air Conditioning System

- The air conditioning system on this machine contains the fluorinated greenhouse gas refrigerant R134a (Global Warming Potential = 1430). The system contains 0.85 kg (1.9 lb) of refrigerant which has a CO₂ equivalent of 1.216 metric tonnes (1.340 tons).

Paint

- Based on best available knowledge, the maximum allowable concentration, measured in parts per million (PPM), of the following heavy metals in paint are:
 - Barium < 0.01%
 - Cadmium < 0.01%
 - Chromium < 0.01%
 - Lead < 0.01%

Sound Performance

ISO 6395:2008 (external) – 103 dB(A)

ISO 6396:2008 (inside cab) – 70 dB(A)

- Hearing protection may be needed when operating with an open operator station and cab (when not properly maintained or doors/windows open) for extended periods or in a noisy environment.

Oils and Fluids

- Caterpillar factory fills with ethylene glycol coolants. Cat Diesel Engine Antifreeze/Coolant (DEAC) and Cat Extended Life Coolant (ELC) can be recycled. Consult your Cat dealer for more information.
- Cat Bio HYDO™ Advanced is an EU Ecolabel approved biodegradable hydraulic oil.
- Additional fluids are likely to be present, please consult the Operations and Maintenance Manual or the Application and Installation guide for complete fluid recommendations and maintenance intervals.

Features and Technology

- The following features and technology may contribute to fuel savings and/or carbon reduction. Features may vary. Consult your Cat dealer for details.
 - Advanced hydraulic systems balance power and efficiency
 - Smart mode matches machine power to digging requirements automatically
 - Eco mode supports reduced fuel consumption for light applications
 - Utilizing Cat technologies can help increase operating efficiencies
 - Extended service intervals help decrease maintenance costs
 - Programmable high-efficiency cooling fans run only when needed
 - The latest hydraulic oil filter provides longer life with a 3,000-hour replacement interval

Recycling

- The materials included in machines are categorized as below with approximate weight percentage. Because of variations of product configurations, the following values in the table may vary.

| Material Type | Weight Percentage |
|--------------------------|-------------------|
| Steel | 84.28% |
| Iron | 4.95% |
| Nonferrous Metal | 2.37% |
| Mixed Metal | 1.45% |
| Mixed-Metal and Nonmetal | 0.94% |
| Plastic | 1.19% |
| Rubber | 0.17% |
| Mixed Nonmetallic | 0.21% |
| Fluid | 2.94% |
| Other | 1.50% |
| Uncategorized | 0.00% |
| Total | 100% |

- A machine with higher recyclability rate will ensure more efficient usage of valuable natural resources and enhance End-of-Life value of the product. According to ISO 16714:2008 (Earthmoving machinery – Recyclability and recoverability – Terminology and calculation method), recyclability rate is defined as percentage by mass (mass fraction in percent) of the new machine potentially able to be recycled, reused or both.

All parts in the bill of material are first evaluated by component type based on a list of components defined by the ISO 16714:2008 and Japan CEMA (Construction Equipment Manufacturers Association) standards. Remaining parts are further evaluated for recyclability based on material type.

Because of variations of product configurations, the following value in the table may vary.

Recyclability – 97%



オフロード法2014年
基準適合



国土交通省
超低騒音型建設機械

For more complete information on Cat products, dealer services, and industry solutions, visit us on the web at www.cat.com

© 2024 Caterpillar
All rights reserved

Materials and specifications are subject to change without notice. Featured machines in photos may include additional equipment. See your Cat dealer for available options.

CAT, CATERPILLAR, LET'S DO THE WORK, their respective logos, "Caterpillar Corporate Yellow," the "Power Edge" and Cat "Modern Hex" trade dress as well as corporate and product identity used herein, are trademarks of Caterpillar and may not be used without permission. VisionLink is a trademark of Caterpillar Inc., registered in the United States and in other countries.

Based on the Labor, Safety and Health Laws in Japan, employer of small construction equipment are required to provide specific training for all operators on machines with ship weight less than 3 metric ton. For machines greater than 3 metric ton, operator needs to obtain operator license certification from a Government approved registered training school.

AEXQ4001-00 (10-2024)
Build Number: 07H
(Japan)

